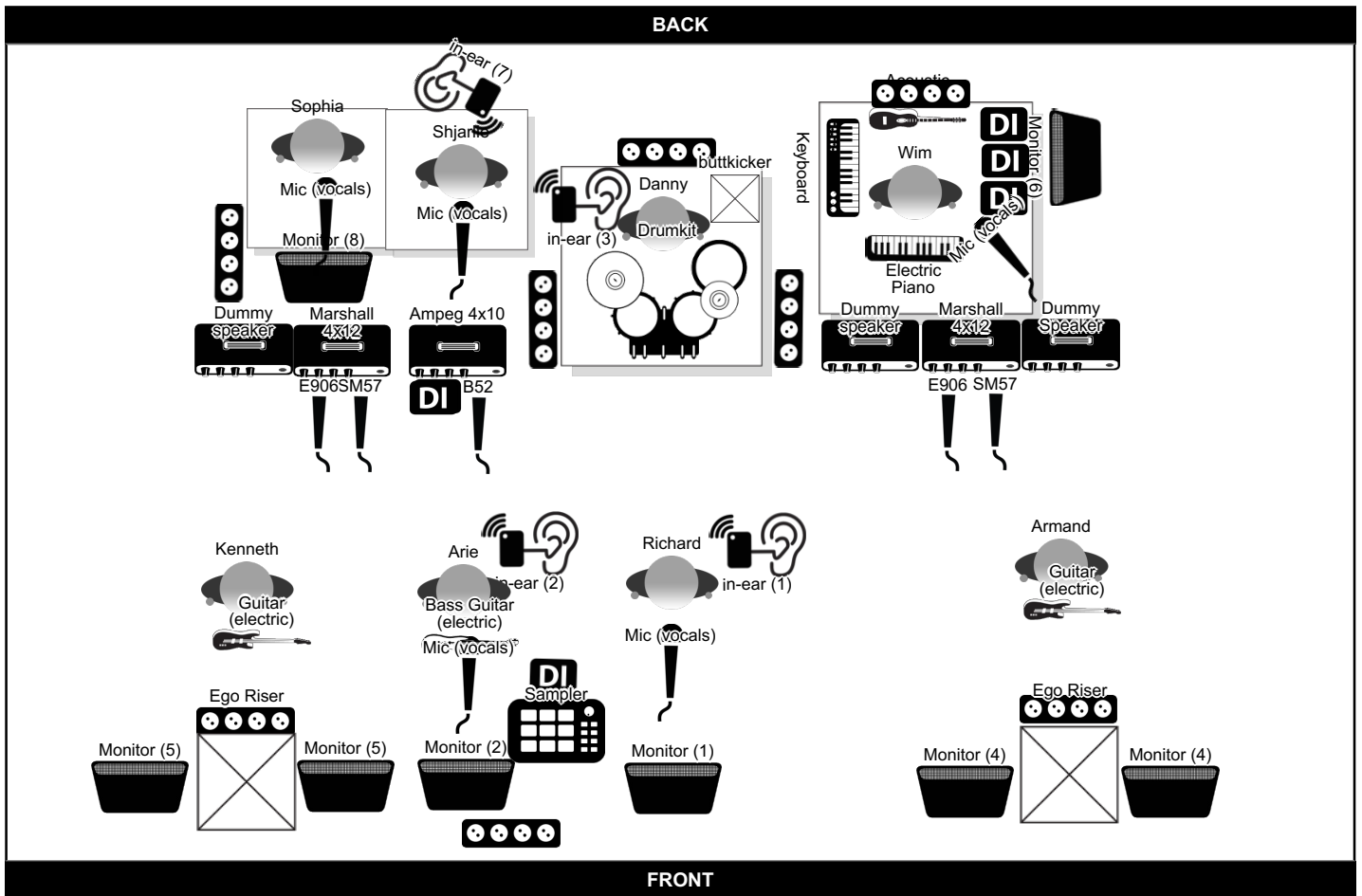




The Muse Experience (Slash n' Roses XXL)

Contact: arjan kok (0615851825 / ariebassie@gmail.com)



Extra Info

Wireless mics - Shure Beta 58 Wireless supplied by venue(NO Sennheiser, prefer SHURE higher level)

8 split channels from FOH for in-ears. In ears are always run STEREO

Lead guitar walks around a lot, please make sure there is lead guitar on every monitor.

Black skirted Drumriser 3 x 2 meter, height 0,40 meter

Room front stage for 2 ego-risers in between monitors.

Backdrop 5 x 3 meter (Will be hung at center stage at the back wall by stagehands on site. Downside banner 1,5 meter from stagefloor)

When mixing desk present a Behringer X32 is preferred. We will bring mixing files on a flash disk.

When screens present, please project the Slash n' Roses logo. We will bring the logo on a flash disk.

All powersupplies need a dutch adaptor(supplied by venue)

Each band member would like 2 bottles of flat water (0,5 liter) on stage, not visible for the audience.

1 roll of black gaffer on site during soundcheck.

Merchstand 3x2 meter with possibility to hang shirts and a table for the cash register.

Frequencies wireless guitar systems : 2.4 Ghz Max frequency 20 - 20.9 kHz Min frequency 10 -14 Hz

Frequencies in ear monitors :

Lead vocals : 864.900 Mhz

Drums : 516 - 558 Mhz

Bas : 500.100

Monitor Groups

Group	Soundmix
Group 1	Lead Vocals, Backing Vocals, Lead guitar, Rhythm guitar, Kick, snare, keys
Group 2	Lead Vocals, Backing vocals, bass, lead guitar, rhythm guitar, full drumkit, keys
Group 3	Lead Vocals, Backing vocals, bass, lead guitar, rhythm guitar, full drumkit, keys
Group 4	Lead guitar, Rhythm guitar, Lead Vocals, Kick, Snare
Group 5	Rhythm guitar, Lead guitar, Lead Vocals, Kick, Snare
Group 6	Keys, backing vocals, lead vocals, acoustic guitar, rhythm guitar, lead guitar
Group 7	Backing vocals, Lead Vocals, keys, rhythm guitar
Group 8	Backing vocals, Lead vocals, keys, Rhythm guitar

The Muse Experience (Slash n' Roses XXL)

Contact: arjan kok (0615851825 / ariebassie@gmail.com)

Line Up

Name	Instrument
Arie	Mic (vocals), Bass Guitar (electric), Sampler, Ampeg 4x10, B52, Ego Riser, Ego Riser
Armand	Guitar (electric), Marshall 4x12, Dummy speaker, SM57, E906, Dummy Speaker
Kenneth	Guitar (electric), Marshall 4x12, Dummy speaker, SM57, E906
Richard	Mic (vocals)
Wim	Keyboard, Electric Piano, Acoustic Guitar, Mic (vocals)
Danny	Drumkit, buttkicker
Sophia	Mic (vocals)
Shjarlie	Mic (vocals)

The Muse Experience (Slash n' Roses XXL)

Contact: arjan kok (0615851825 / ariebassie@gmail.com)

Channel list

Channel	Band Member	Instrument	Mic / DI	Insert
1	Danny	Kick in	B52	
2	Danny	Kick out	B91	
3	Danny	Snare top	SM57	
4	Danny	Snare Bottom	SM57	
5	Danny	Hi Hat	Cond	
6	Danny	Tom 1	E 604	
7	Danny	Tom 2	E 604	
8	Danny	Floor 1	E 604	
9	Danny	OH left	cond	
10	Danny	OH right	cond	
11	Danny	OH ride	cond	
12	Arie	Bass amp	DI	
13	Arie	Bass amp	MIC	
14	Arie	Looper	DI	
15	Arie	Looper Mon	DI	In ears only
16	Armand	Lead guitar	SM57	
17	Armand	Lead guitar	sennheiser 906	
18	Kenneth	Rhythm guitar	SM57	
19	Kenneth	Rhythm guitar	sennheiser 906	
20	Wim	Piano L	DI	
21	Wim	Piano R	DI	
22	Wim	Synth L	DI	
23	Wim	Synth R	DI	
24	Wim	Acoustic Guitar	DI	
25	Wim	Backing vocals	SM57	
26	Arie	Backing vocals	SM58	
27	Sophia	Backing vocals	Wireless mic	
28	Shjarlie	Backing vocals	Wireless mic	
29	Richard	Lead Vocals	Wireless mic	